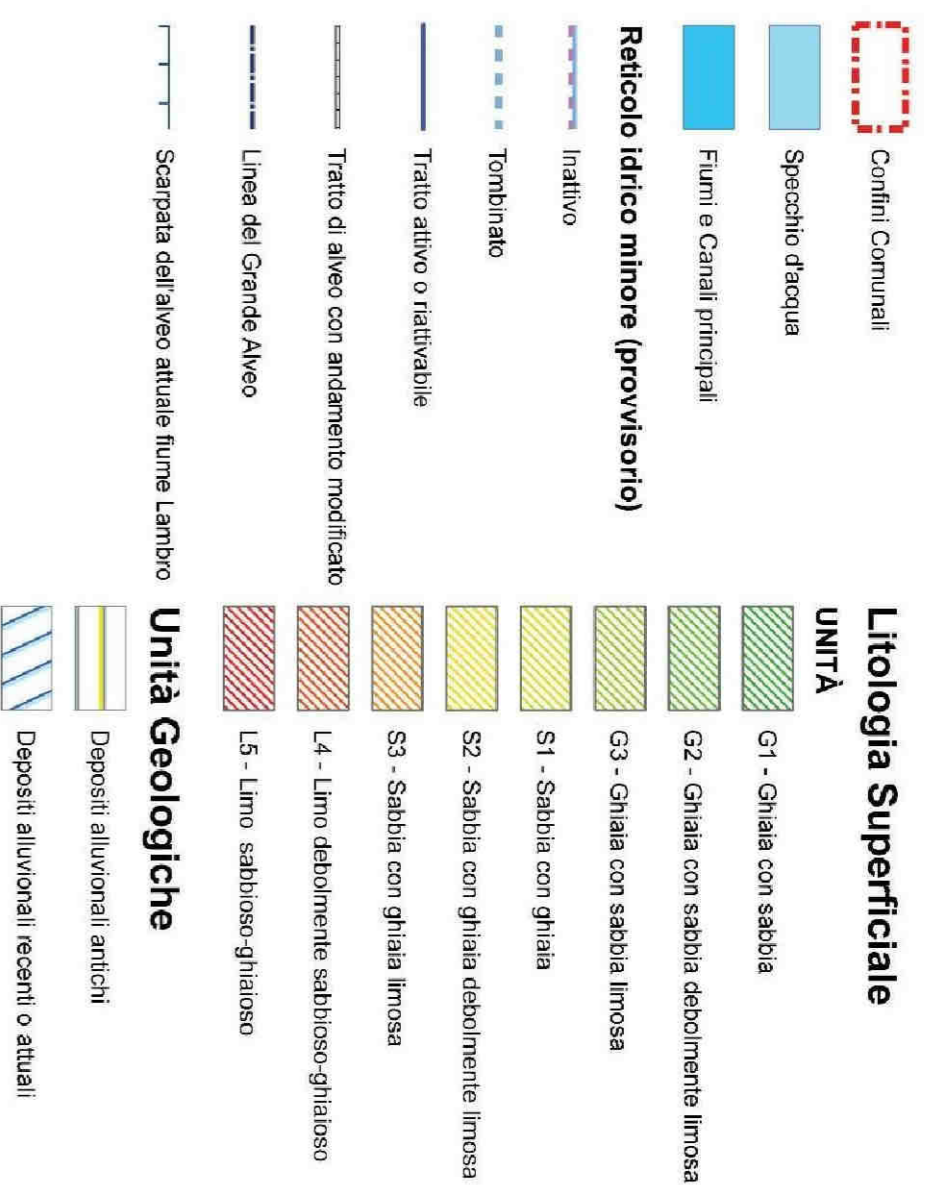
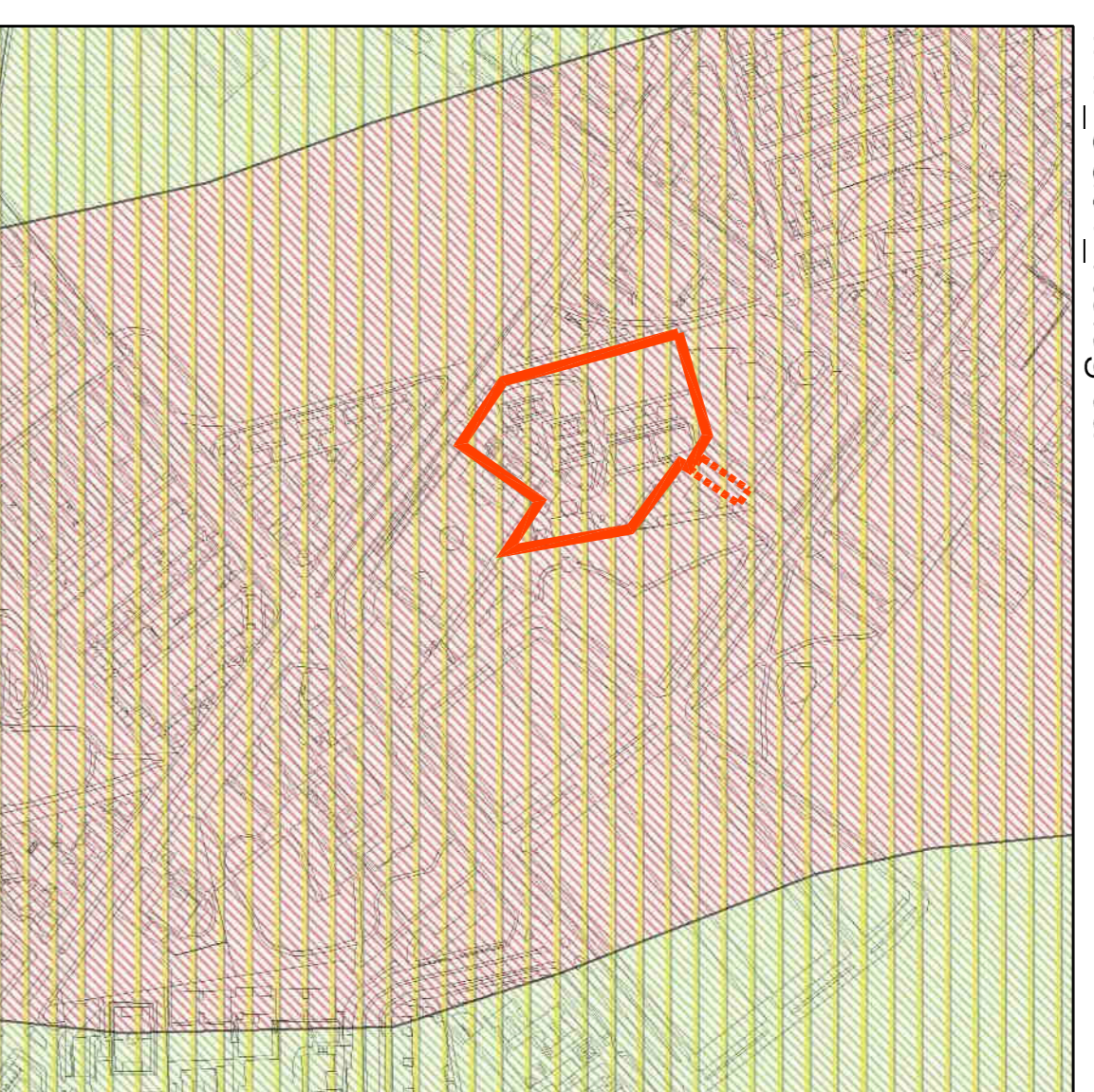
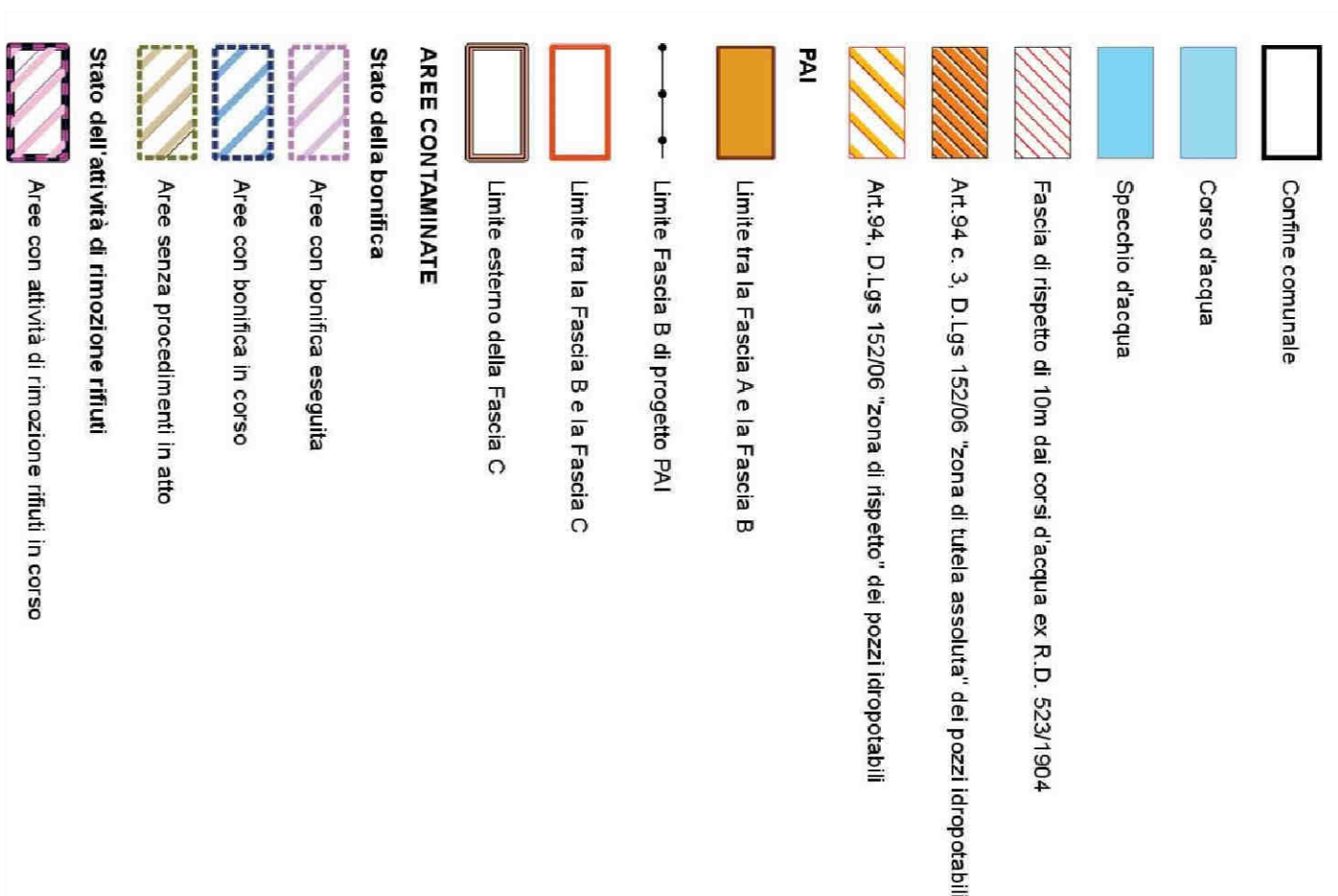
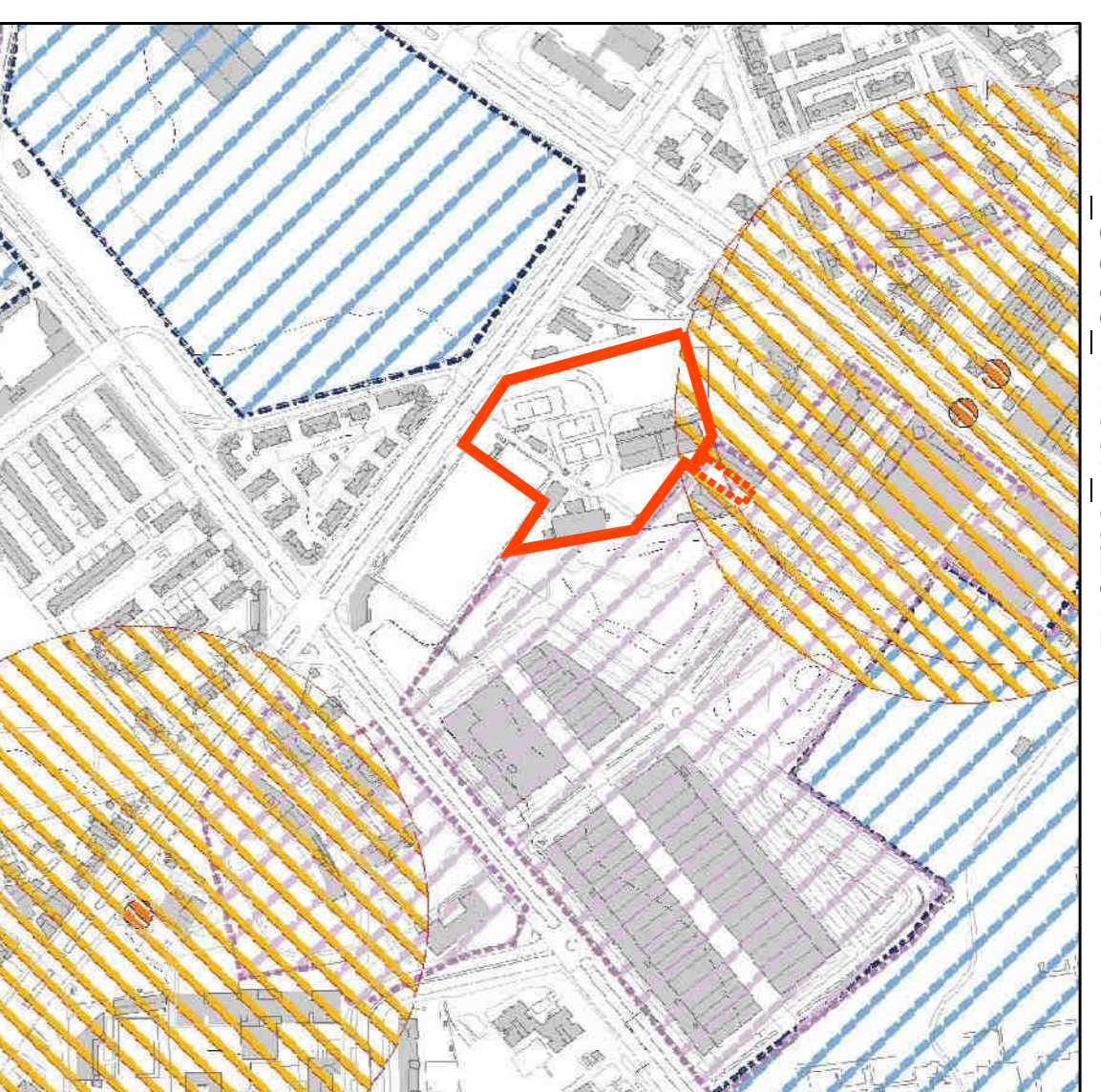


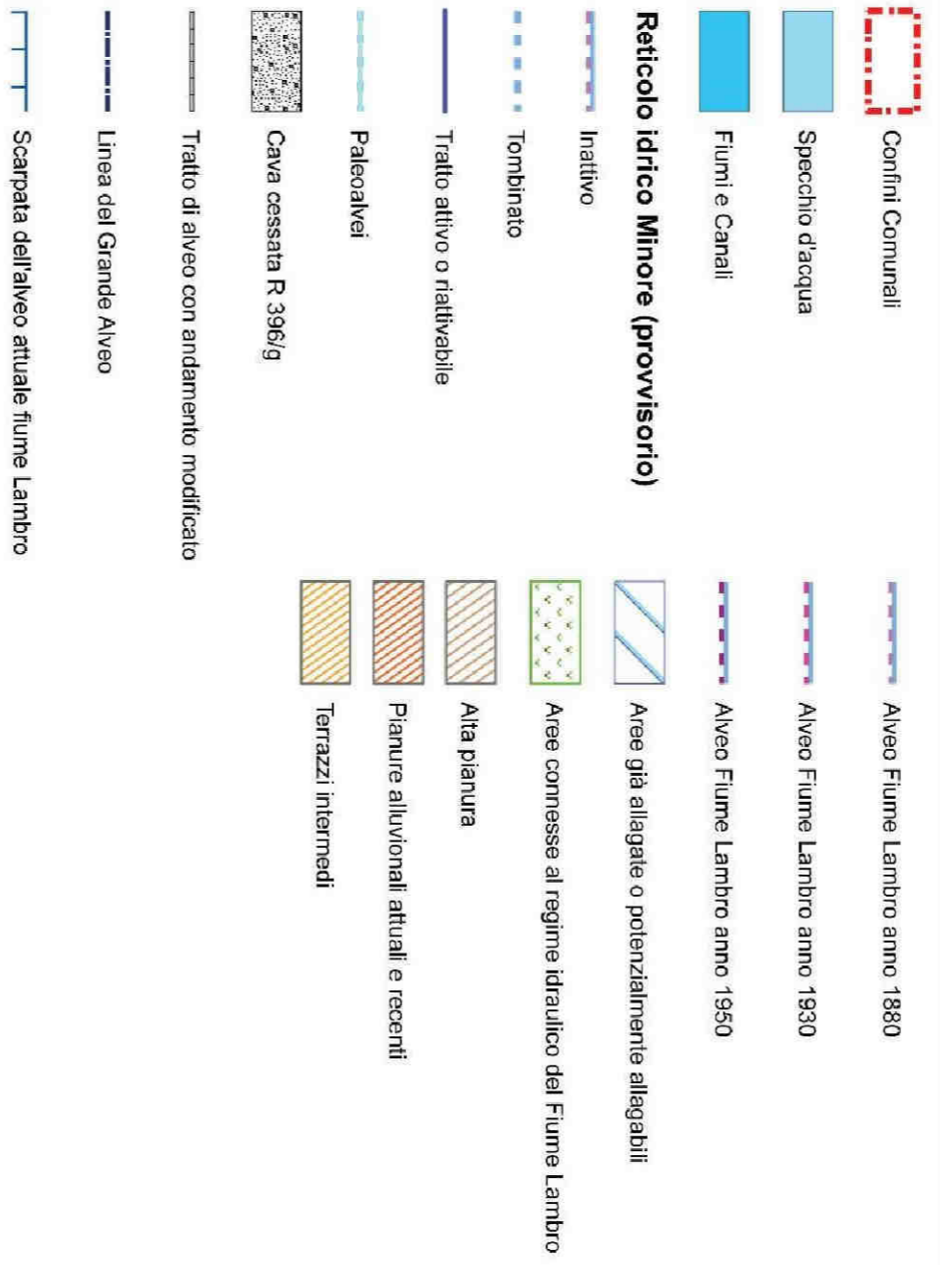
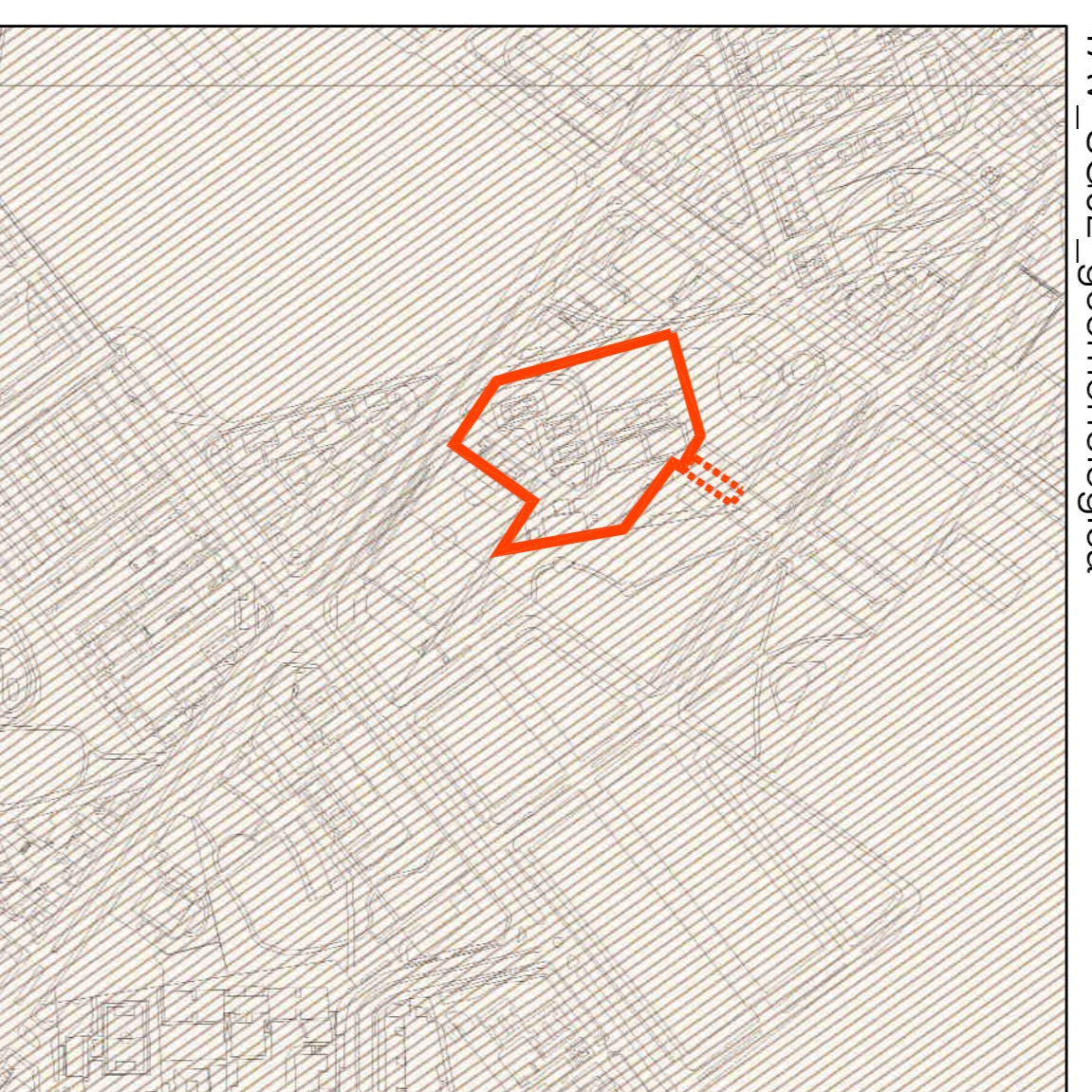
TAV SG01 litologica



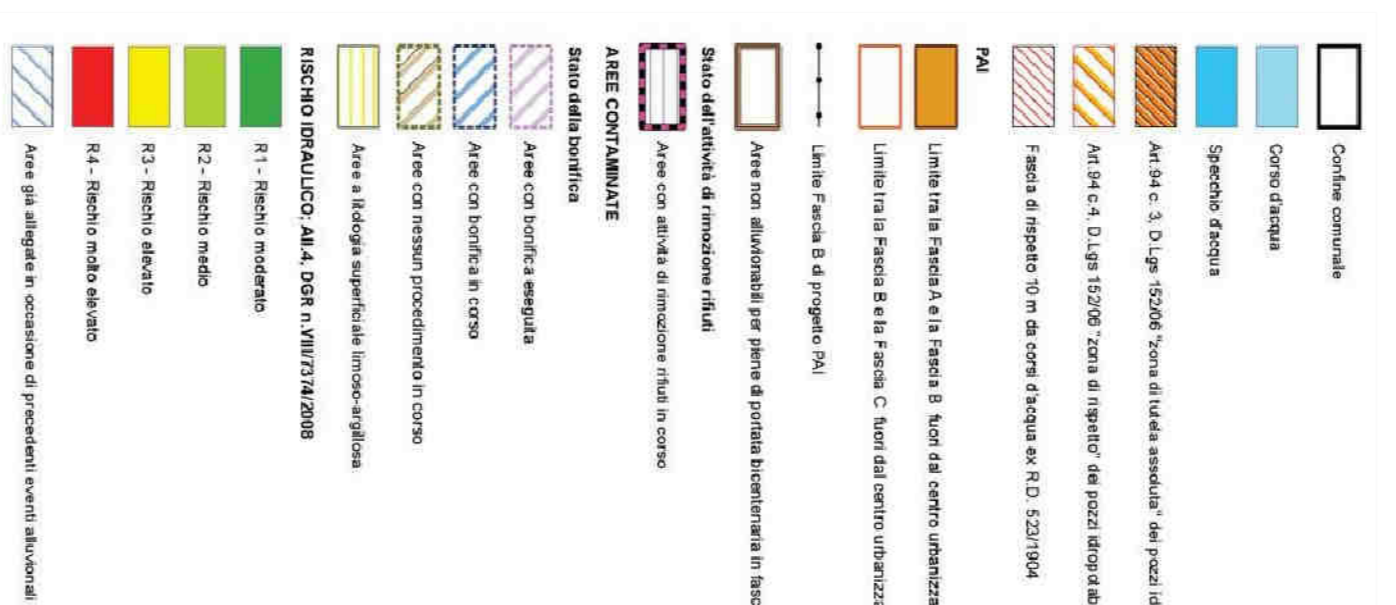
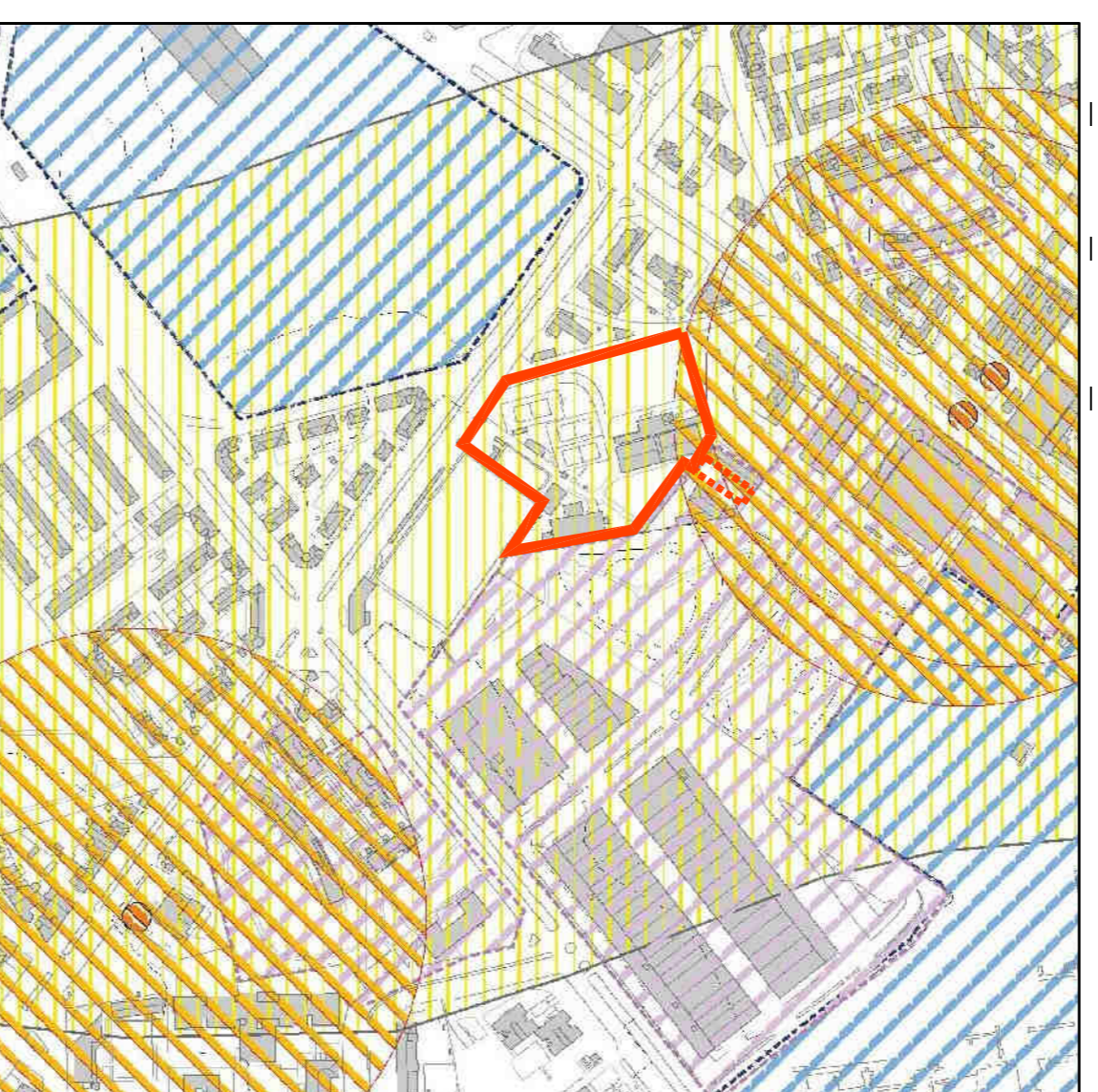
TAV SG05 vincoli_ott2012



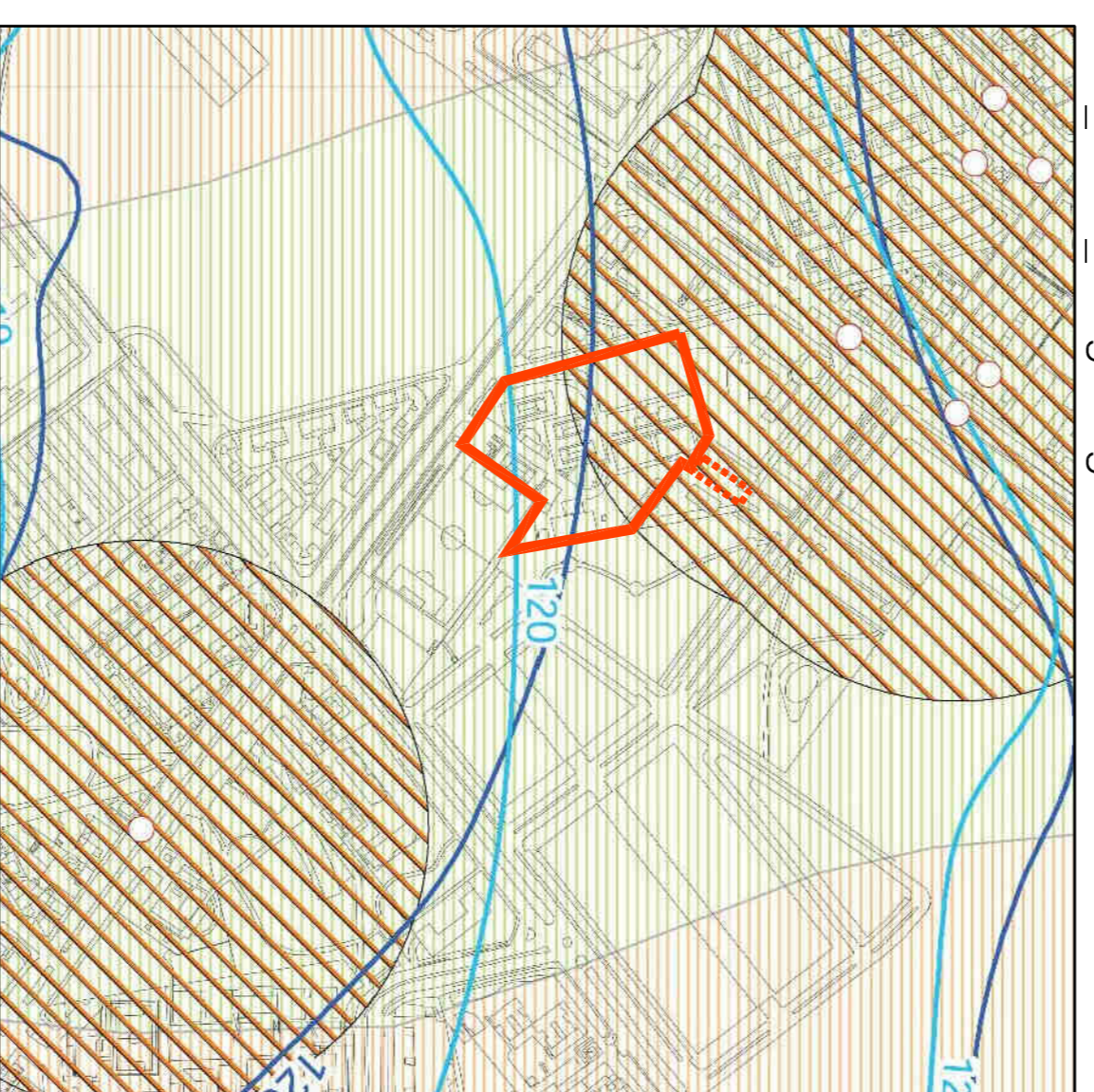
TAV SG02 geomorfologica



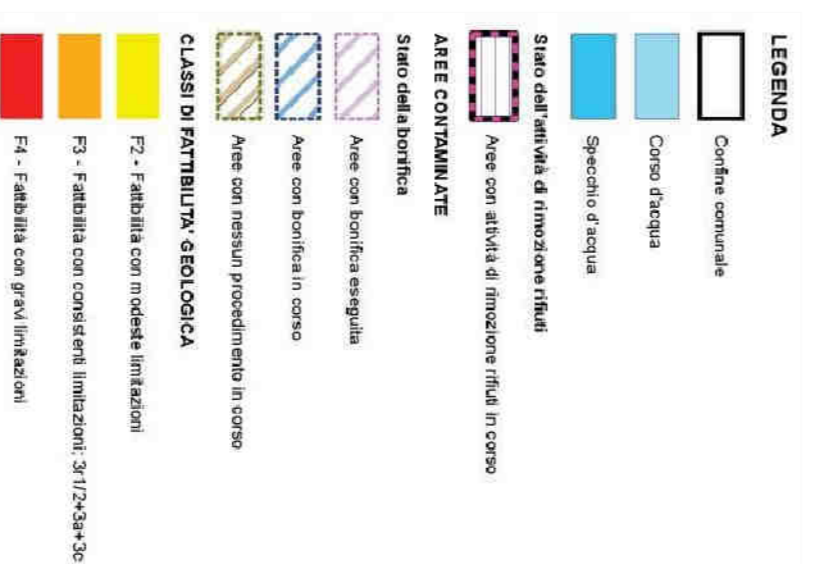
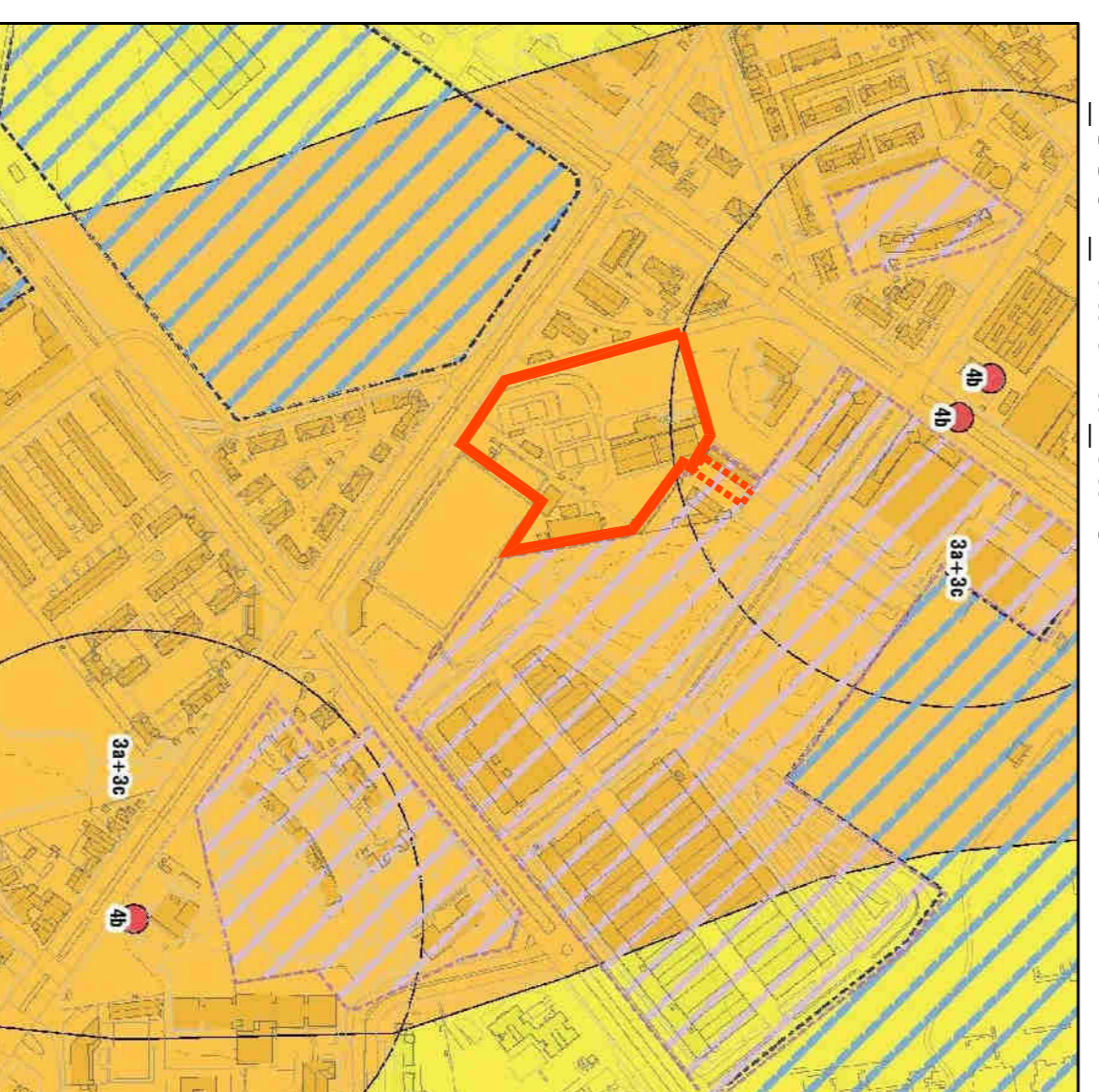
TAV SG06 sintesi_ott2012



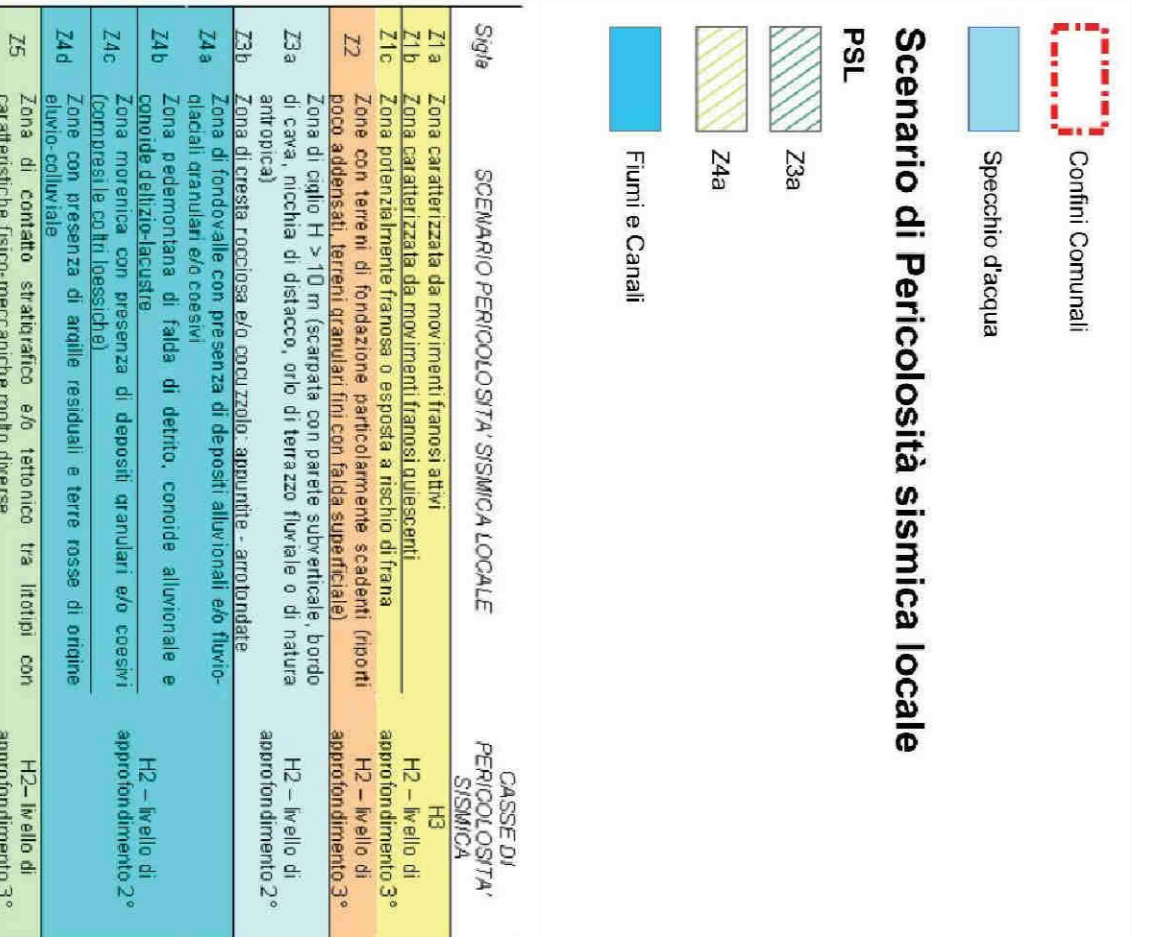
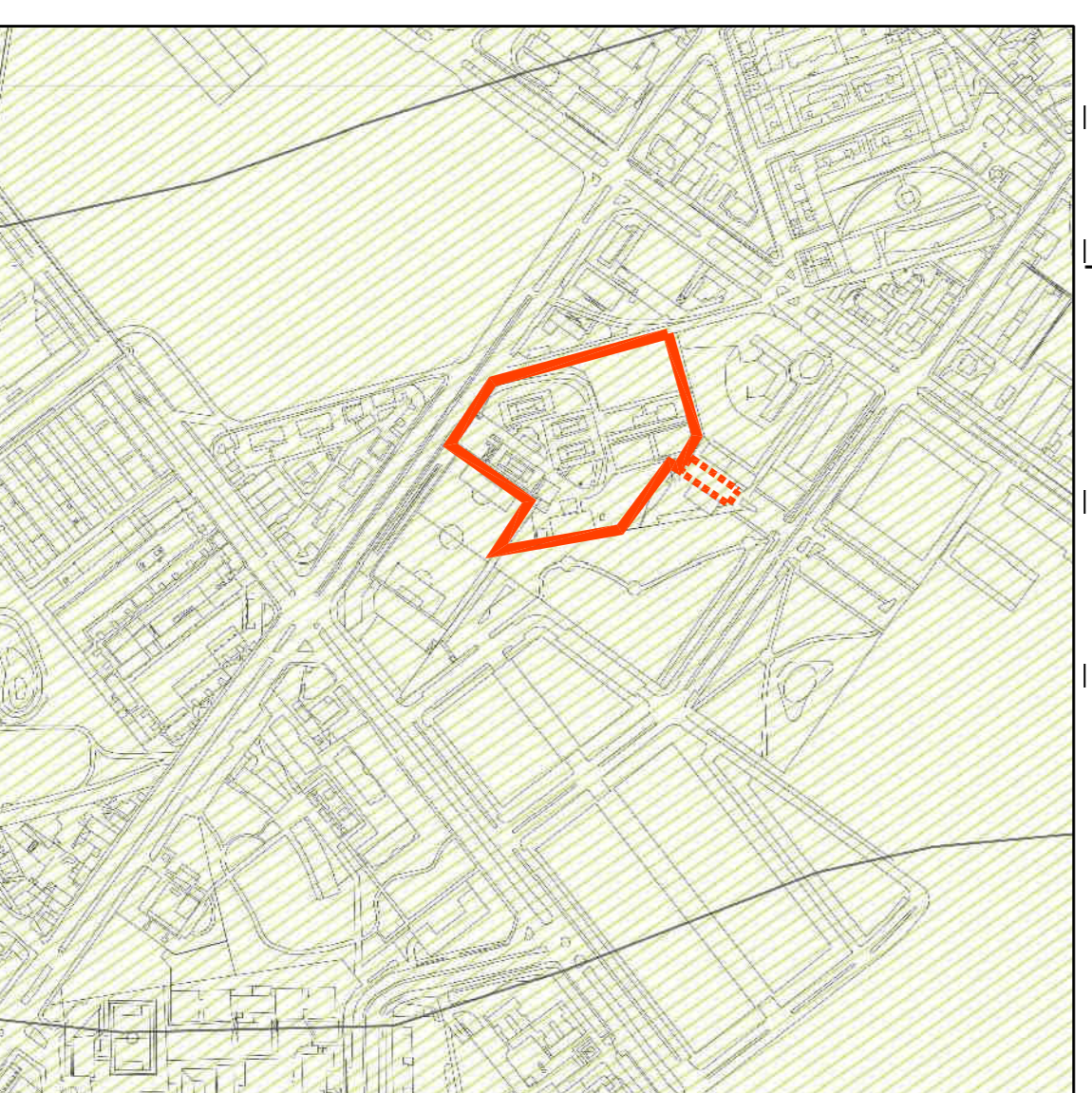
TAV SG03 idrogeologica



TAV SG07 fattibilità_ott2012



TAV SG04 pericolosità_sismica_locale



concea merli architetti associati

Via dei porti 22 • 20092 Cinisello Balsamo (MI) • info@conceamerli.it • www.conceamerli.it
tel 02 01 22 001 • fax 02 59 84 10 77 • P.IVA 05450780960

COMMITTENTE
CIERRE SRL A SOCIO UNICO
Sede legale: Via del Bollo, 4 20123 Milano
Sede operativa: Via F. Cilea, 2 20051 Lissone (MI)

PROGETTISTA DIRETTORE LAVORI

PROGETTO
Proposta di project financing per l'impianto sportivo comunale
Falcò Tennis
Via General Cantone 105
Sesto S. Giovanni (MI)

OGGETTO
estratti studio geologico PGT

REVISIONE DATA COMMENTO TAVOLA NUMERO

SCALA DATA FILE 13-500 - centno sportivo Falcò
13/000 08/2016

01 bis

In scala di tavola, a termini di legge. In formato di stampa: sempre con il possesso di titolo di studio o titolo di laurea. In scala di tavola, a termini di legge.