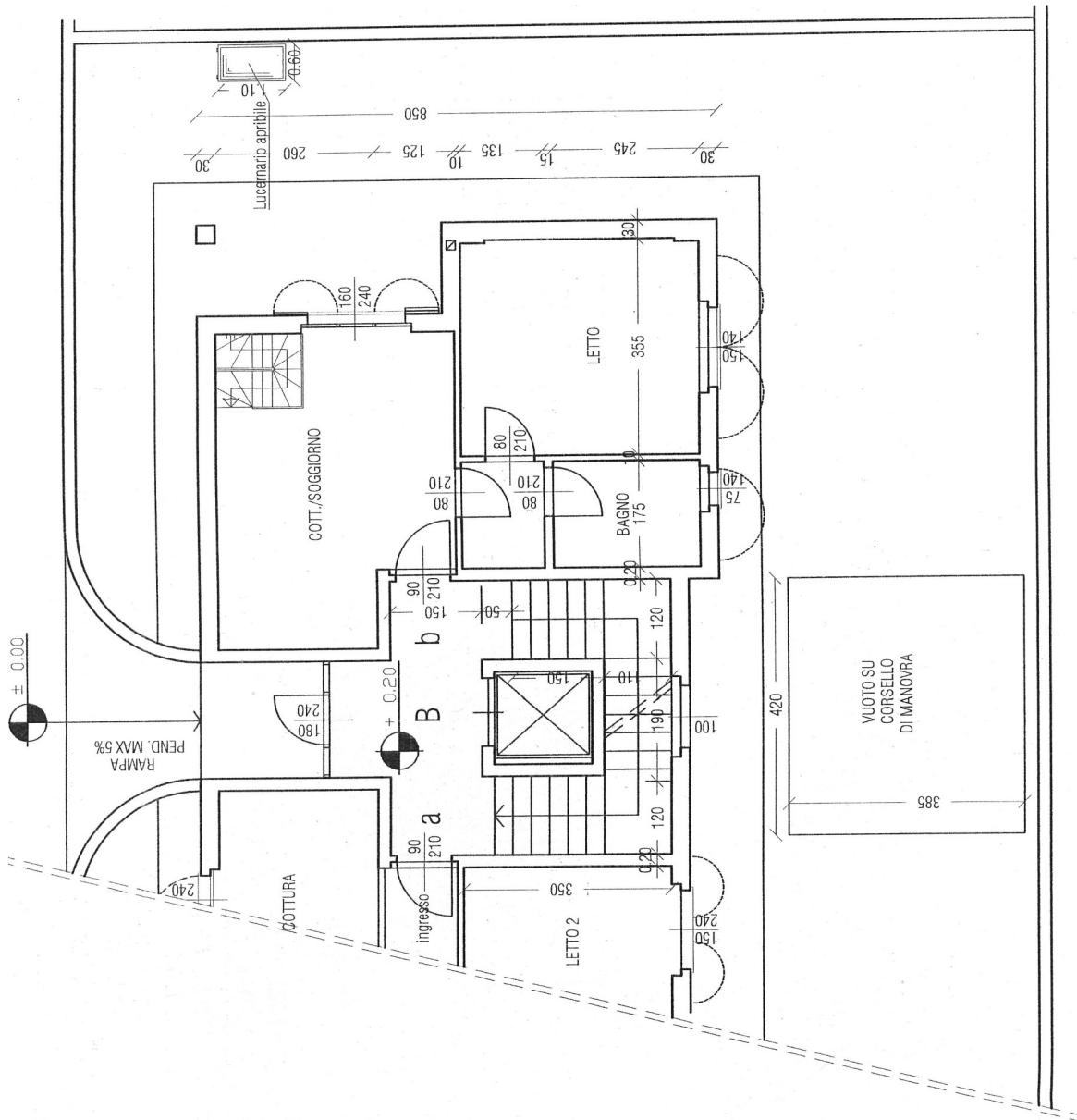
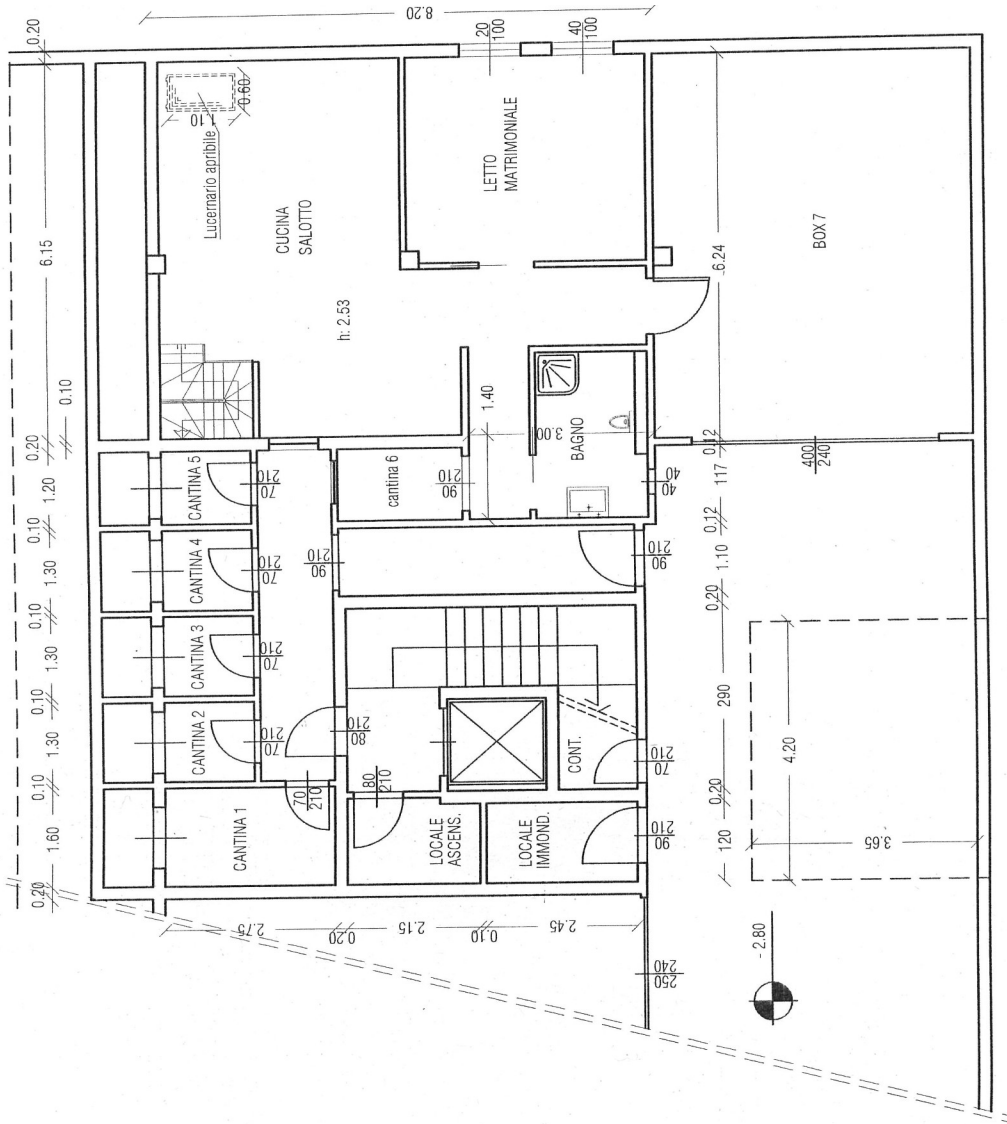


# ALLEGATO 1 PLANIMETRIA

## Piano Terra



Piano interrato



Superficie:  $(6.15 + 0.20 + 0.10) \times 8.20 = 52.89 \text{ mq}$   
 $(1.40 \times 3.00) = 4.20 \text{ mq}$   
**TOTALE: 52.89 + 4.20 = 57.09 mq**  
 Superficie da condonare = arrotondato a 57.00 mq

STATO FINALE